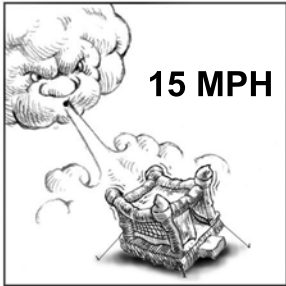


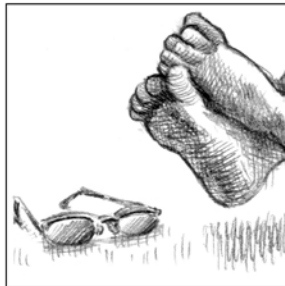
★ **SAFETY RULES**

DO NOT USE EQUIPMENT IN HIGH WINDS OVER 15 MPH. TURN OFF MOTOR. THE EQUIPMENT CAN TURN OVER RESULTING IN SERIOUS INJURIES TO THE OCCUPANTS. DO NOT RESUME OPERATION UNTIL ADVERSE CONDITIONS CEASE.



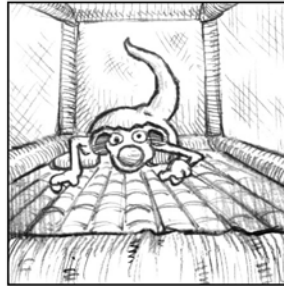
x _____

REMOVE SHOES, EYEGLASSES, BELT BUCKLES AND ANY OTHER SHARP OBJECTS BEFORE ENTERING.



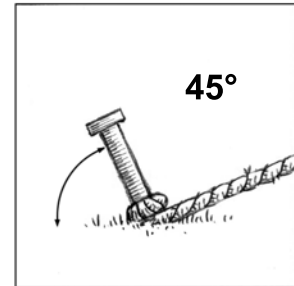
x _____

DO NOT ALLOW CLIMBING ON THE NETTING OR WALLS BY PERSONS INSIDE OR OUTSIDE THE UNIT.



x _____

UNITS MUST BE STAKED OR TIED DOWN ON ALL CORNERS.



x _____

ALWAYS HAVE THE UNIT SUPERVISED BY AN ADULT WHO HAS REVIEWED AND UNDERSTANDS THIS RENTAL CONTRACT.



NEVER ALLOW CHILDREN TO BE UNSUPERVISED IN THE UNIT.

x _____

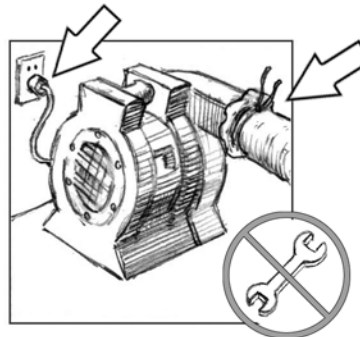
DO NOT ALLOW HOSES, WATER, SILLY STRING, FOOD, DRINKS, CONFETTI, CANDY OR TRASH OF ANY KIND IN THE UNIT.



A MINIMUM \$75.00 CLEANING FEE WILL BE CHARGED.

x _____

IF BLOWER STOPS OR AIR PRESSURE IS LOW, REMOVE CHILDREN AND CHECK ON PROBLEM.



THE BLOWER SHOULD BE THE ONLY DEVICE OPERATING ON THAT CIRCUIT.

x _____

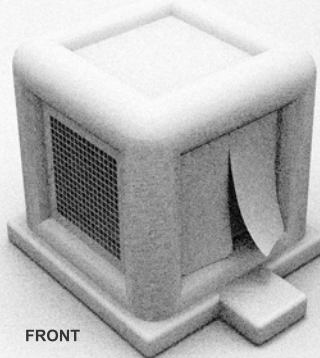
AIR TUBES IN REAR OF UNIT SHOULD BE SECURELY TIED TO BLOWER. UNUSED TUBES MUST BE TIED OFF TO PREVENT AIR ESCAPING.

IF YOU HAVE GENERATOR PROBLEMS, CALL THE OFFICE ASAP. 232-JUMP

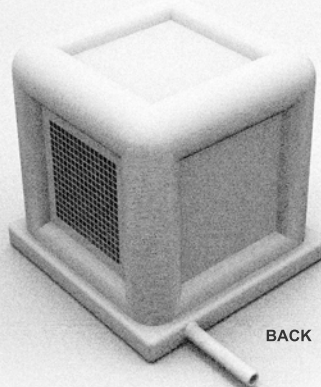
CHECK EXTENSION CORD.

★ **INSPECTION**

- Please note any damage. You are responsible for damage to the unit while it is in your possession.



FRONT



BACK

Funtastic Jumps: _____

Date: _____

Customer: _____

Date: _____